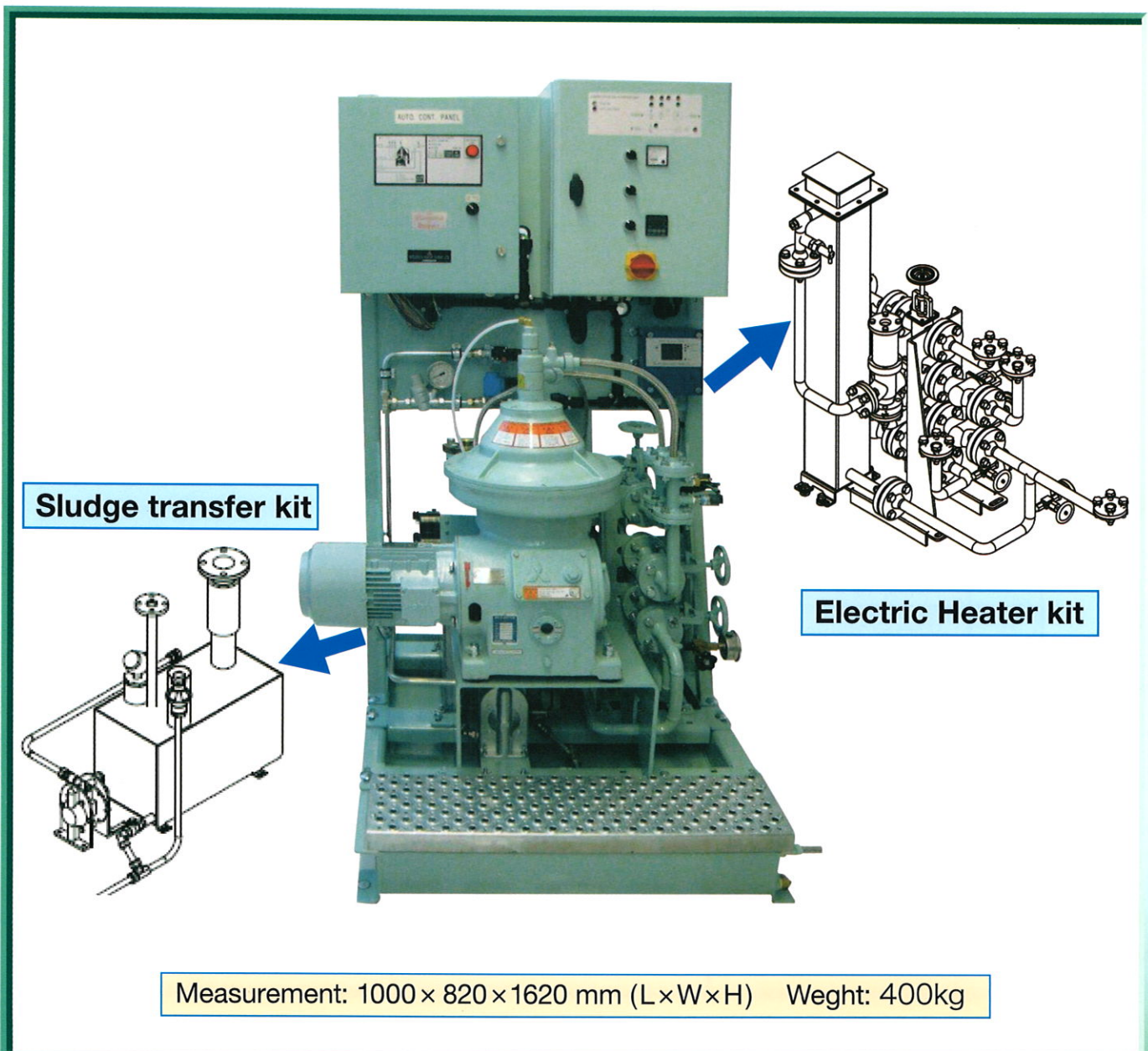


**NEW PRODUCT**

# MITSUBISHI SELFJECTOR SJ08 MODULE

**NEW SMALL PURIFIER MODULIZED TYPE FOR EU CUSTOMERS.  
DESIGNED & PRODUCED IN EUROPE.**

**SUITABLE CAPACITY FOR FUEL & LUB. OIL FOR SMALL SHIPS  
with M/E 1000PS ~3700PS**



**Sludge transfer kit**

**Electric Heater kit**

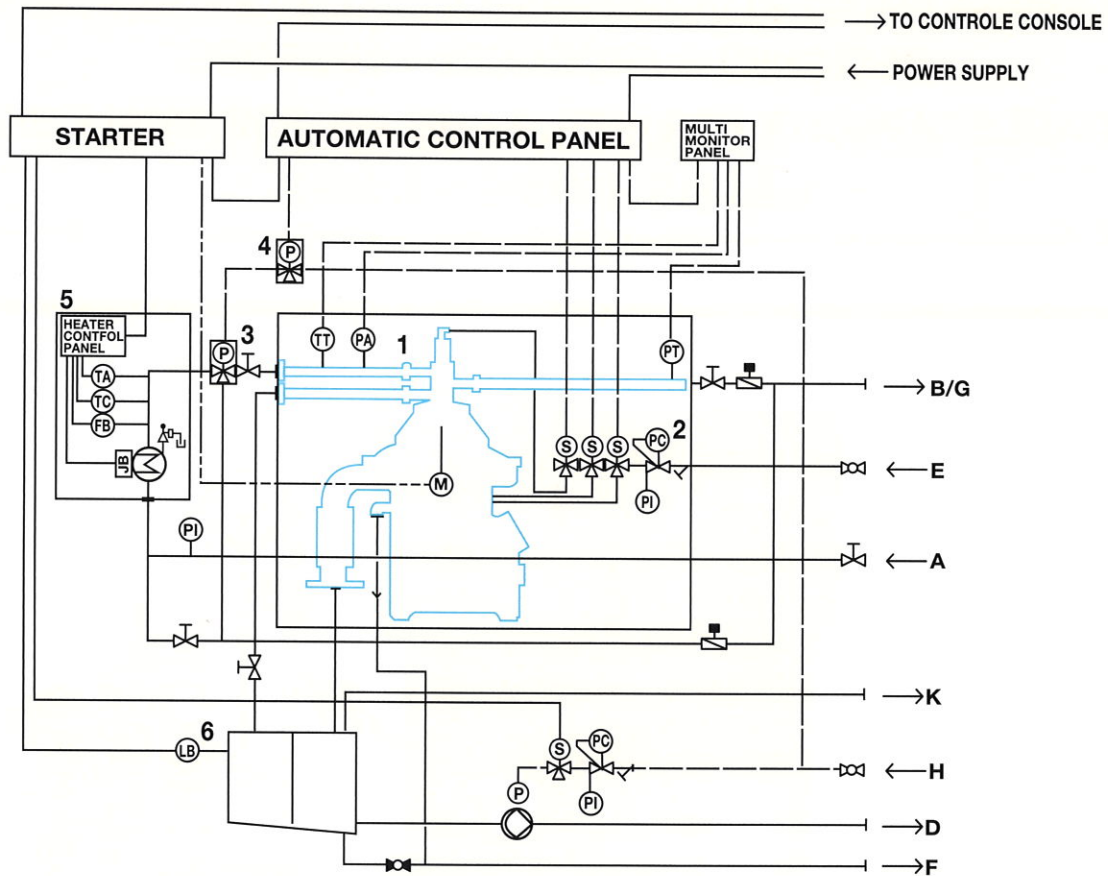
Measurement: 1000 x 820 x 1620 mm (L x W x H) Weight: 400kg



# Components

- SJ08(Oil Purifier)
- Auto. Control Panel
- Starter
- Feed Pump (Option)
- Electric Heater Kit
- Sludge Transfer Kit

# Flow Sheet



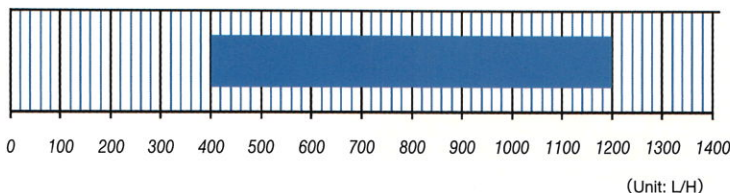
## Equipment

1	SJ08 (Oil Purifier)
2	Water Valve Unit
3	Feed Valve
4	3-Way Sdenoid Valve
5	Electric Heater Kit
6	Sludge Transfer Kit

## Connection

A	Dirty Oil Inlet	20A
B/G	Oil Return	20A
C	Water Outlet	20A
D	Sludge Outlet	50A
E	Water Inlet	Ø15A
F	Operating Water Drain	G1/2"
H	Compressed Air Inlet	Ø15A
K	Vapor Outlet	50A

# Capacity Range



Capacity range shows standard for MGO/ MDO, HFO (RMG700) & Lubricant oil

<Note> Capacity will be changed due to separation conditions.